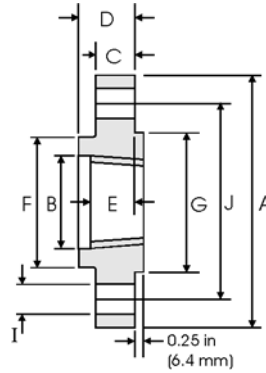




Threaded Flanges - ANSI B16.5



Class 1500 lb

| Pipe | | Flange Data | | | | | Hub | Raised Face | Drilling Data | | | Weight |
|-------------------|---|------------------|------------------|----------------------|----------------|---------------------|--------------|---------------|-----------------|--------------------|-----------------------------|---|
| Nominal Pipe Size |  | A | B | C | D | E | F | G | H | I | J |  |
| | Outside Diameter | Overall Diameter | Counter-bore min | Flange Thickness min | Overall Length | Threaded length min | Hub Diameter | Face Diameter | Number of Holes | Bolt Hole Diameter | Diameter of Circle of Holes | kg/ piece |
| | in mm | in mm | in mm | in mm | in mm | in mm | in mm | in mm | | in mm | in mm | |
| 1/2 | 0.840 | 4.750 | 0.930 | 0.880 | 1.250 | 0.880 | 1.500 | 1.380 | 4 | 0.880 | 3.250 | 1.74 |
| | 21.30 | 120.6 | 23.60 | 22.30 | 31.70 | 22.30 | 38.10 | 35.00 | | 22.30 | 82.50 | |
| 3/4 | 1.050 | 5.120 | 1.140 | 1.000 | 1.380 | 1.000 | 1.750 | 1.690 | 4 | 0.880 | 3.500 | 2.34 |
| | 26.70 | 130.0 | 29.00 | 25.40 | 35.00 | 25.40 | 44.40 | 42.90 | | 22.30 | 88.90 | |
| 1 | 1.315 | 5.880 | 1.410 | 1.120 | 1.620 | 1.120 | 2.060 | 2.000 | 4 | 1.000 | 4.000 | 3.44 |
| | 33.40 | 149.3 | 35.80 | 28.40 | 41.10 | 28.40 | 52.30 | 50.80 | | 25.40 | 101.6 | |
| 1 1/4 | 1.660 | 6.250 | 1.750 | 1.120 | 1.620 | 1.190 | 2.500 | 2.500 | 4 | 1.000 | 4.380 | 3.91 |
| | 42.20 | 158.7 | 44.40 | 28.40 | 41.10 | 30.20 | 63.50 | 63.50 | | 25.40 | 111.2 | |
| 1 1/2 | 1.900 | 7.000 | 1.990 | 1.250 | 1.750 | 1.250 | 2.750 | 2.880 | 4 | 1.120 | 4.880 | 5.36 |
| | 48.30 | 177.8 | 50.50 | 31.70 | 44.50 | 31.70 | 69.85 | 73.15 | | 28.40 | 123.9 | |
| 2 | 2.375 | 8.500 | 2.500 | 1.500 | 2.250 | 1.500 | 4.120 | 3.620 | 8 | 1.000 | 6.500 | 9.85 |
| | 60.30 | 215.9 | 63.50 | 38.10 | 57.15 | 38.10 | 104.6 | 91.90 | | 25.40 | 165.1 | |
| 2 1/2 | 2.875 | 9.620 | 3.000 | 1.620 | 2.500 | 1.880 | 4.880 | 4.120 | 8 | 1.120 | 7.500 | 13.7 |
| | 73.00 | 244.3 | 76.20 | 41.10 | 63.50 | 47.70 | 123.9 | 104.6 | | 28.40 | 190.5 | |

Notes

- The thread conforms to ASME B1.20.1 NTP threads as described in Section 10. (The only exceptions are small male and female plain face threaded flanges which use NPSL locknut threads.)
- Class 300 and higher threaded flanges are counter-bored. Threads are chamfered to the counterbore at an angle of 45° (approx).
- Weights are based on manufacturer's data and are approximate.
- For tolerances see page 8-4.